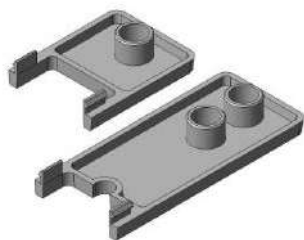
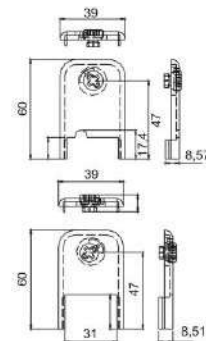


Série / Serie / Série / System
 TC5200



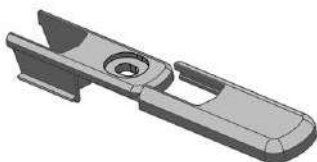
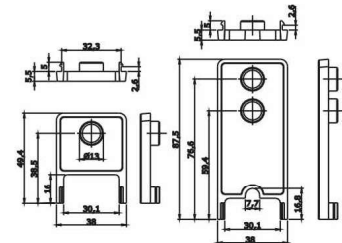
Ref./Code	Espec. / Caract. / Spec.	QTY / GR
9684P	PA6	200 6430



Série / Serie / Série / System
 CITY TOWER



Ref./Code	Espec. / Caract. / Spec.	QTY / GR
1827P	PA6	500 0

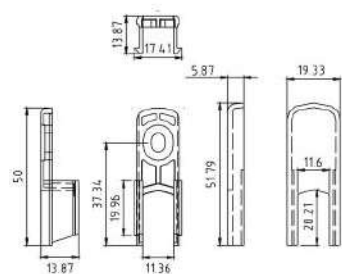


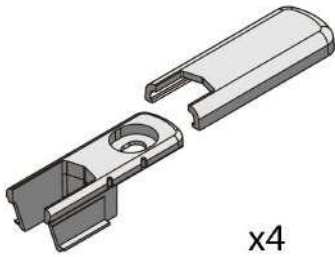
X4

Série / Serie / Série / System
 SERIES MEXICO



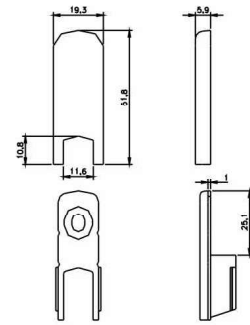
Ref./Code	Espec. / Caract. / Spec.	QTY / GR
9729P	PA6	500 0



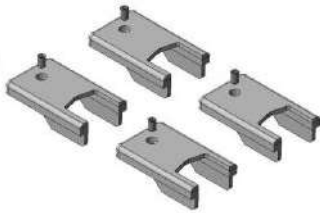


x4

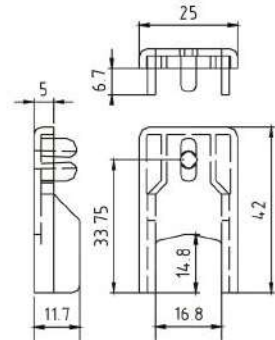
Série / Serie / Série / System
 SERIES MEXICO



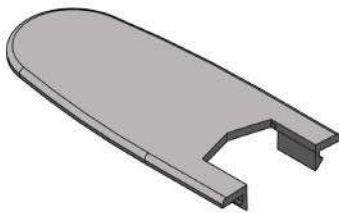
Ref./Code	Espec. / Caract. / Spec.	QTY / GR
9730P	PA6	500 0



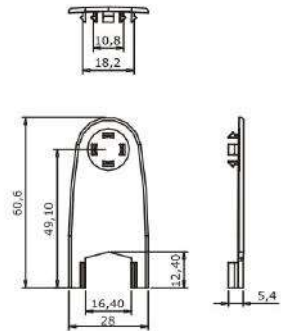
Série / Serie / Série / System



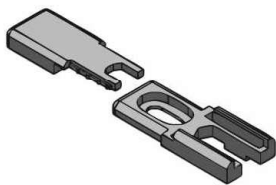
Ref./Code	Espec. / Caract. / Spec.	QTY / GR
9723P	Preto - PA6 - Perno zinc.	250 4725



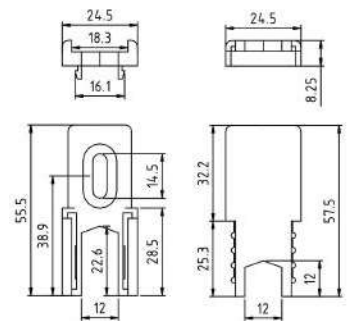
Série / Serie / Série / System
 NA



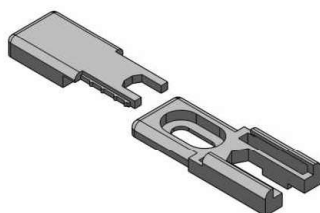
Ref./Code	Espec. / Caract. / Spec.	QTY / GR
1313P	PA6	2500 7250



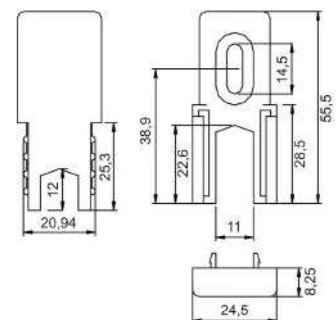
Série / Serie / Série / System



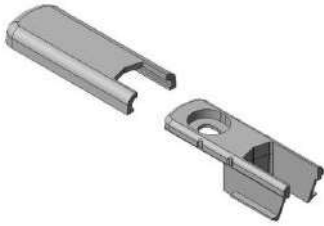
Ref./Code	Espec. / Caract. / Spec.	QTY / GR
9715P	PA6	1000 7100



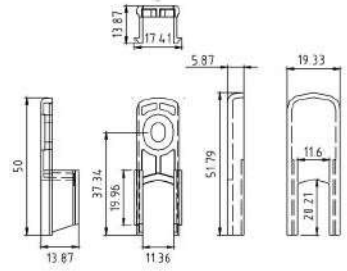
Série / Serie / Série / System
 PCP/LIN3600/EUROSLIDE



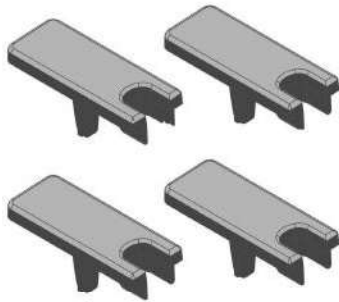
Ref./Code	Espec. / Caract. / Spec.	QTY / GR
SK967PII	PA6	250 8700



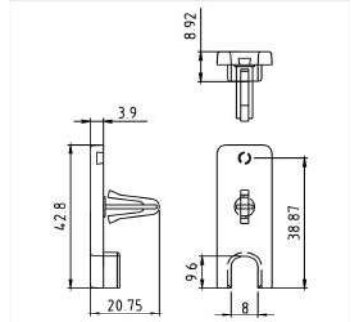
Série / Serie / Série / System
S4000



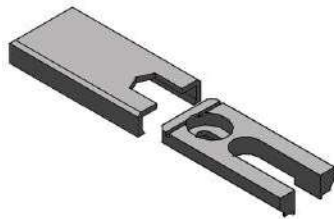
Ref./Code	Espec. / Caract. / Spec.	QTY / GR
1724P	PA6	2500 0



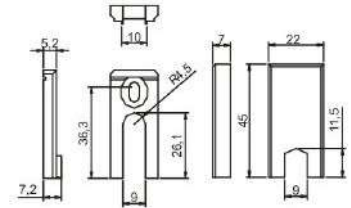
Série / Serie / Série / System
S3600- MEXICO



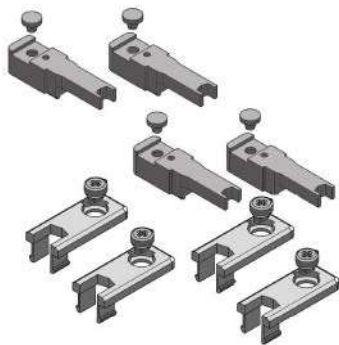
Ref./Code	Espec. / Caract. / Spec.	QTY / GR
SK9712PII	PA6	2000 3500



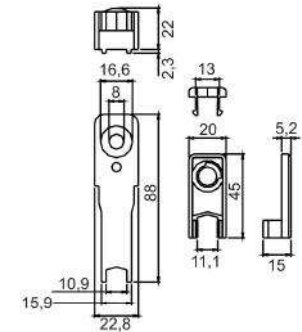
Série / Serie / Série / System
B03/B05/CS/N21000/N23000



Ref./Code	Espec. / Caract. / Spec.	QTY / GR
311P	PA6	1000 5425



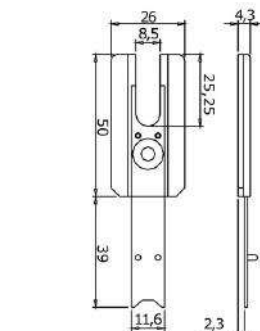
Série / Serie / Série / System
TC600



Ref./Code	Espec. / Caract. / Spec.	QTY / GR
SK9486PII	PA6-PVC 55 SHORE A Guias Batente / Tapeta Lateral / Guide latéral / Shock Absorber	100 8000



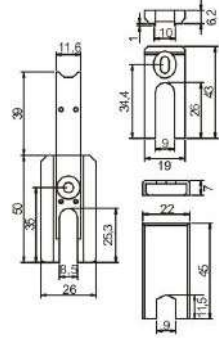
Série / Serie / Série / System
B03/B05/CS/N21000/N23000



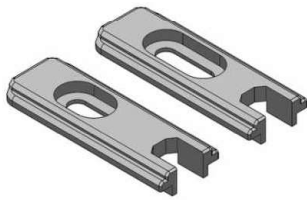
Ref./Code	Espec. / Caract. / Spec.	QTY / GR
356P	PA6	2000 6250



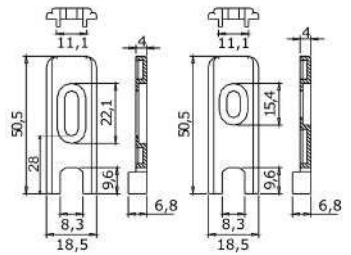
Série / Serie / Série / System
 B03/CS/N23000/TC3000



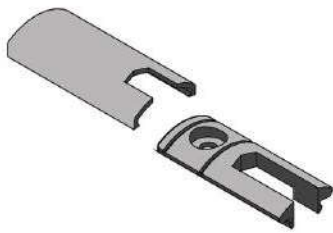
Ref./Code	Espec. / Caract. / Spec.	QTY / GR
951P	PA6	150 5250



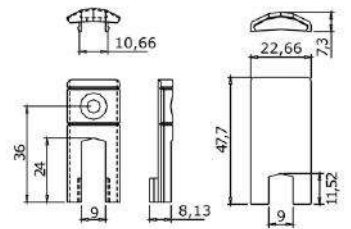
Série / Serie / Série / System
 CM



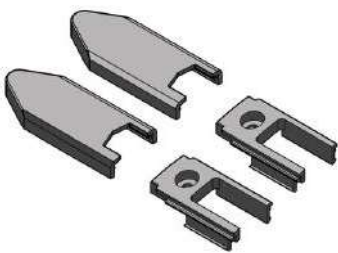
Ref./Code	Espec. / Caract. / Spec.	QTY / GR
1208P	PA6	2000 9600



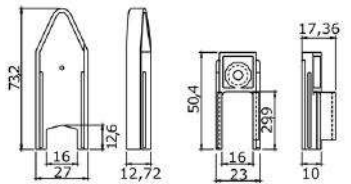
Série / Serie / Série / System
 CONFORT/SW3/N21000/TF200



Ref./Code	Espec. / Caract. / Spec.	QTY / GR
1017P	PA6	1000 5250



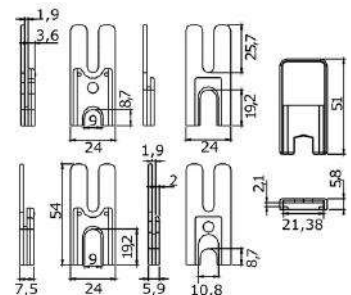
Série / Serie / Série / System
 COR 4200 / CT ANICOLOR



Ref./Code	Espec. / Caract. / Spec.	QTY / GR
1500P	PA6	300 6500



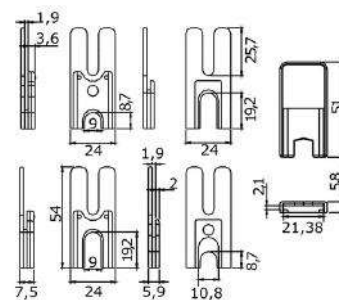
Série / Serie / Série / System
 G90 ANICOLOR



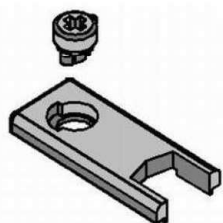
Ref./Code	Espec. / Caract. / Spec.	QTY / GR
9293P	PA6	100 6000



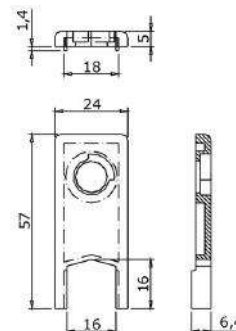
Série / Serie / Série / System
 G90/MILLENIUM



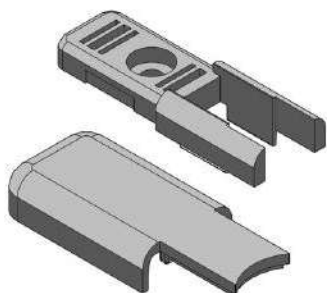
Ref./Code	Espec. / Caract. / Spec.	QTY / GR
9082P	PA6	100 4400
9107P	PA6	100 4444



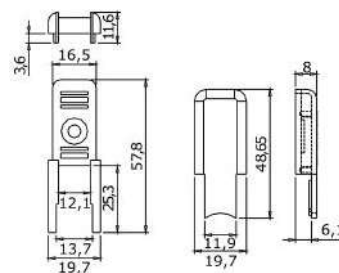
Série / Serie / Série / System
 TC4200



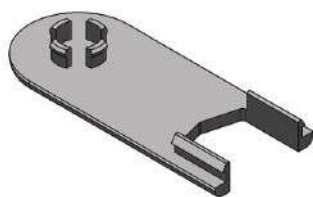
Ref./Code	Espec. / Caract. / Spec.	QTY / GR
9163P	PA6	300 6400



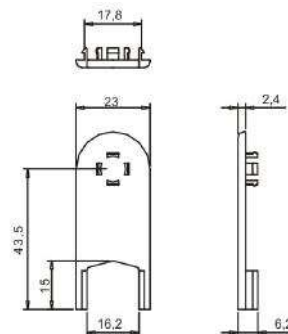
Série / Serie / Série / System
 LIN 203000



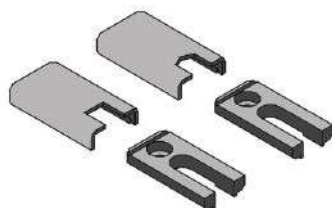
Ref./Code	Espec. / Caract. / Spec.	QTY / GR
1487P	PA6	2000 14875



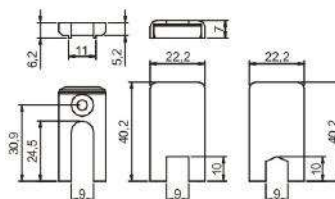
Série / Serie / Série / System
 N25000 / CT ANICOLOR



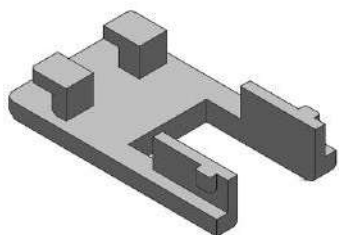
Ref./Code	Espec. / Caract. / Spec.	QTY / GR
1414P	PA6	2500 7350



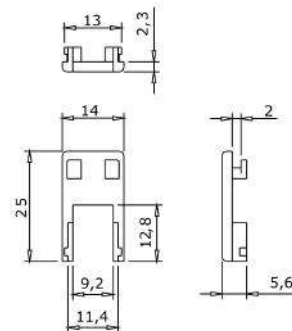
Série / Serie / Série / System
 PF-70/CF



Ref./Code	Espec. / Caract. / Spec.	QTY / GR
396P	PA6	500 4925

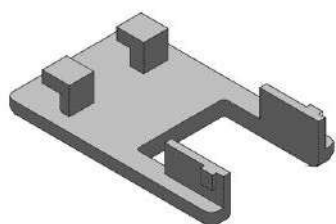


Série / Serie / Série / System
 PF-70/CF

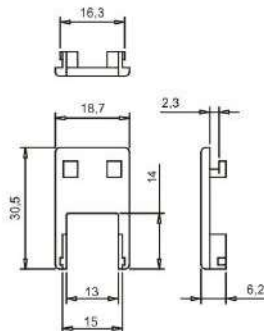


Ref./Code Espec. / Caract. / Spec. QTY / GR

423P PA6 2000 1410

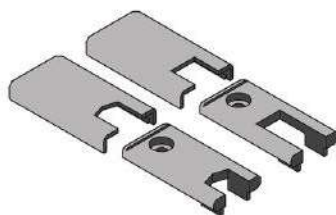


Série / Serie / Série / System
 PF-90/CP

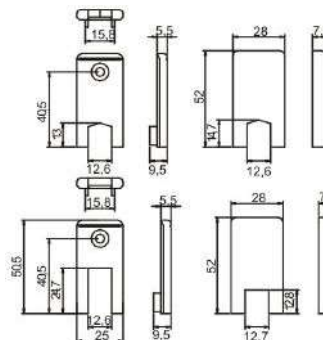


Ref./Code Espec. / Caract. / Spec. QTY / GR

429P PA6 2000 2230

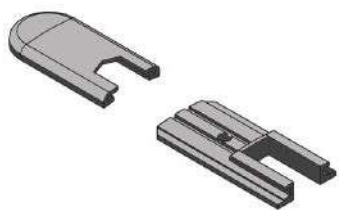


Série / Serie / Série / System
 PF-90/CP/TC4000

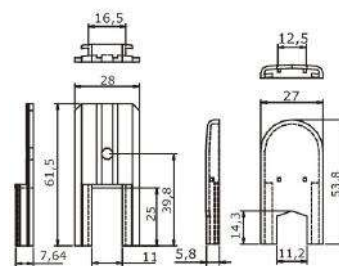


Ref./Code Espec. / Caract. / Spec. QTY / GR

395P PA6 250 3500

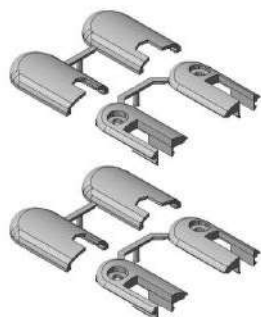


Série / Serie / Série / System
 PRESTIGE

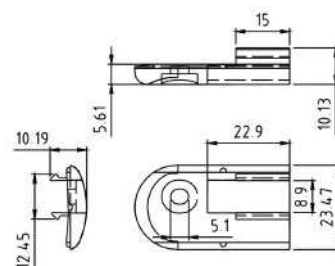


Ref./Code Espec. / Caract. / Spec. QTY / GR

1218P PA6 600 5100

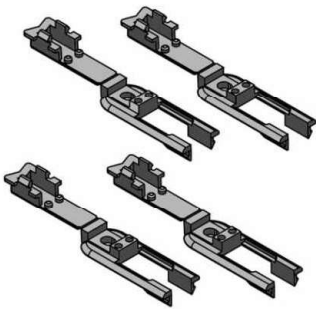


Série / Serie / Série / System
 JM

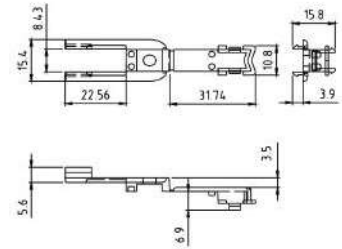


Ref./Code Espec. / Caract. / Spec. QTY / GR

9703P PA66 300 8407



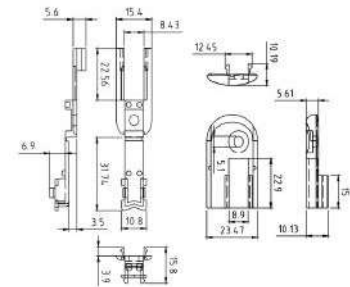
Série / Serie / Série / System
JM



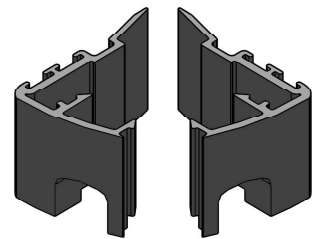
Ref./Code	Espec. / Caract. / Spec.	QTY / GR
9704P	PA66	500 4100



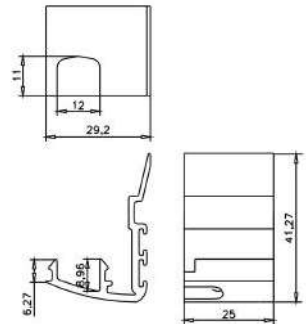
Série / Serie / Série / System
JM



Ref./Code	Espec. / Caract. / Spec.	QTY / GR
9710P	PA66	200 7040



Série / Serie / Série / System
CL 70 PERIMETRAL



Ref./Code	Espec. / Caract. / Spec.	QTY / GR
270P	PA6	1000 8900